

# General Education Committee 2015-2016 Annual Report

## I. Objectives

- A. Goal: Continue the long-range plan for core assessment, including assessment, data collection and analysis, and review and feedback.
- B. Objectives
  - 1. Enhance teaching of the core competencies
  - 2. Push the idea that this is our culture
  - 3. Recognize students that have exceeded expectations
  - 4. Disseminate college-wide survey to determine overall opinion of student improvements (especially from PT and NHS areas where students come from Gen Ed to programs)
  - 5. Begin calibration-internal and external

## II. Actions and Outcomes

- A. Actions:
  - 1. COMM 1307 – Mass Communication was accepted for inclusion in the core curriculum. Beginning fall 2016.
  - 2. Western Civilization 1 and 2 were accepted for inclusion in the core curriculum to be submitted to THECB in February.
  - 3. GEOG 1303 – Change EQS I to EQS II and committee recommended the assignment specify the use of “valid sources” in the writing assignment.
  - 4. Concern about notification of dual credit faculty of General Education requirements led to inclusion of Core requirements in adjunct training.
  - 5. Checklist of General Education Process for Department chairs was created.
  - 6. Transferability of EDUC 1300 was discussed and research into what other 2 year colleges are doing with college success will be done
  - 7. PHIL 1304 was accepted for inclusion in the Language, Philosophy, and Culture area of the core curriculum. Submission to THECB will be in November of 2016.
  - 8. Feedback on Gen Ed committee received as part of the College-Wide Assessment indicates faculty are confident in their ability to implement GE course components and are convinced of its value.
  - 9. A calibration workshop on evaluating written assignments was held May 17<sup>th</sup>.
- B. Outcomes
  - 1. Assessments
    - a) Canvas data was collected in June for Fall 2015 and Spring 2016 Core courses. Data were analyzed by semester, number of student semester credit hours (SCH), and by specific core competencies.
    - b) Not all courses used the appropriate 2015-2016 Outcomes; some still have the 2014-2015 outcomes, with a different scale. These courses were not included in data analysis.

## 2. Results

- a) Competency-specific results for fall 2015 and spring 2016, along with combined fall/spring results, are included in section III of this document.
- b) Analysis of comparative results (fall – spring, <20 SCH – 20+ SCH, and spring 15 – spring 16) are included.
  - (1) There was no significant difference between fall 2015 and spring 2016 results. The data were combined for further analysis.
  - (2) Results for students with 20+ SCH were significantly higher than results for students with <20 SCH. Further analysis was considered solely on the basis of students with 20+ SCH.
  - (3) There was no significant difference between spring 2016 (20+ SCH, excluding students who did not submit) and spring 2015 (20+ SCH)
  - (4) CT 2-3 and EQS 2 results by themselves had a drop from spring 2015 to spring 2016.

# Core Curriculum Assessment Information Fall 2015-Spring 2016

This document contains the data analysis for the assessment results for the 2015-2016 academic year. Some data were not included; some faculty used the 2014-15 outcomes, which were based on a different scale (0-2) rather than the current outcomes (scaled 0-3).

## Table of Contents

Core Curriculum Assessment Information Fall 2015-Spring 2016 .....	3
Table 1: Results for Communication .....	4
Table 2: Results for Critical Thinking.....	6
Table 3: Results for Empirical and Quantitative Skills.....	8
Table 4: Results for Personal Responsibility .....	10
Table 5: Results for Social Responsibility.....	12
Table 6: Results for Teamwork .....	14
Table 7: Results for Communication .....	16
Table 8: Results for Critical Thinking.....	18
Table 9: Results for Empirical and Quantitative Skills.....	20
Table 10: Results for Personal Responsibility .....	22
Table 11: Results for Social Responsibility.....	24
Table 12: Results for Teamwork .....	26
Table 13: Comparison of Fall 2015 to Spring 2016: Percentages of Success.....	28
Table 14: Comparison of Students with <20 to Students with 20+ SCH: Percentages of Success.....	30
Table 15: Combined Results: Communication Skills .....	33
Table 16: Combined Results: Critical Thinking.....	34
Table 17: Combined Results: Empirical and Quantitative Skills.....	35
Table 18: Combined Results: Personal Responsibility .....	36
Table 19: Combined Results: Social Responsibility.....	37
Table 20: Combined Results: Teamwork .....	38
Table 21: Comparison of Spring 2015 with Spring 2016: Percentages of Success .....	39

**Tables 15 – 21 are based solely on students with 20+ SCH.**

Table 1: Results for Communication

Fall 2015	Objective	CS1: Written Communication				CS2: Oral Communication		CS3: Visual Communication	
		Organization	Development Support	Language Skills	Format	Develop Support	Express Ideas	Develop Support	Express Ideas
Head-Counts		CS1-1	CS1-2	CS1-3	CS1-4	CS2-1	CS2-2	CS3-1	CS3-2
<20SCH									
	Exceeds	467	409	417	401	33	37	25	28
	Meets	845	919	982	874	156	172	140	154
	Not Met	249	382	312	419	60	62	71	54
	No Sub	526	594	592	609	64	68	58	58
	Totals	<b>2087</b>	<b>2304</b>	<b>2303</b>	<b>2303</b>	<b>313</b>	<b>339</b>	<b>294</b>	<b>294</b>

20+SCH									
	Exceeds	1443	1231	1271	1204	450	379	122	136
	Meets	2106	2270	2365	2193	887	977	569	557
	Not Met	367	610	469	714	73	116	102	101
	No Sub	484	518	525	519	52	58	43	42
	Totals	<b>4400</b>	<b>4629</b>	<b>4630</b>	<b>4630</b>	<b>1462</b>	<b>1530</b>	<b>836</b>	<b>836</b>
<b>Grand Total</b>		<b>6487</b>	<b>6933</b>	<b>6933</b>	<b>6933</b>	<b>1775</b>	<b>1869</b>	<b>1130</b>	<b>1130</b>

% Within Category		CS1-1	CS1-2	CS1-3	CS1-4	CS2-1	CS3-1	CS3-2	CS2-4
<20SCH									
	Exceeds	0.35%	0.31%	0.31%	0.30%	0.02%	0.03%	0.02%	0.02%
	Meets	0.63%	0.69%	0.73%	0.65%	0.12%	0.13%	0.10%	0.11%
	Not Met	0.19%	0.29%	0.23%	0.31%	0.04%	0.05%	0.05%	0.04%
	No Sub	0.39%	0.44%	0.44%	0.45%	0.05%	0.05%	0.04%	0.04%
	Totals	<b>1.56%</b>	<b>1.72%</b>	<b>1.72%</b>	<b>1.72%</b>	<b>0.23%</b>	<b>0.25%</b>	<b>0.22%</b>	<b>0.22%</b>

20+SCH									
	Exceeds	1.08%	0.92%	0.95%	0.90%	0.34%	0.28%	0.09%	0.10%
	Meets	1.57%	1.69%	1.77%	1.64%	0.66%	0.73%	0.42%	0.42%
	Not Met	0.27%	0.46%	0.35%	0.53%	0.05%	0.09%	0.08%	0.08%
	No Sub	0.36%	0.39%	0.39%	0.39%	0.04%	0.04%	0.03%	0.03%
	Totals	<b>3.29%</b>	<b>3.46%</b>	<b>3.46%</b>	<b>3.46%</b>	<b>1.09%</b>	<b>1.14%</b>	<b>0.62%</b>	<b>0.62%</b>



Table 2: Results for Critical Thinking

Fall 2015	Objective:	CT1: Generate/ Communicate				CT 2-3: Analyze/Evaluate			
	Criteria:	Position	Explanation	Evidence	Conclusion	Evidence	Analysis	Evaluation	Synthesis
Head-Counts		CT1-1	CT1-2	CT1-3	CT1-4	CT2-3-1	CT2-3-2	CT2-3-3	CT2-3-4
<20SCH									
	Exceeds	403	370	336	368	78	69	76	64
	Meets	1026	951	928	998	123	114	111	118
	Not Met	273	313	420	328	59	68	63	76
	No Sub	555	546	573	563	115	124	124	116
	Totals	<b>2257</b>	<b>2180</b>	<b>2257</b>	<b>2257</b>	<b>375</b>	<b>375</b>	<b>374</b>	<b>374</b>

20+SCH									
	Exceeds	1214	1159	1054	1077	276	253	211	193
	Meets	2282	2148	2081	2308	1015	1015	1044	1043
	Not Met	416	520	766	525	545	413	409	503
	No Sub	434	415	445	436	276	431	449	374
	Totals	<b>4346</b>	<b>4242</b>	<b>4346</b>	<b>4346</b>	<b>2112</b>	<b>2112</b>	<b>2113</b>	<b>2113</b>
<b>Grand Total</b>		<b>6603</b>	<b>6422</b>	<b>6603</b>	<b>6603</b>	<b>2487</b>	<b>2487</b>	<b>2487</b>	<b>2487</b>

% Within Category		CT1-1	CT1-2	CT1-3	CT1-4	CT2-1	CT2-2	CT2-3	CT2-4
<20SCH									
	Exceeds	0.30%	0.28%	0.25%	0.27%	0.06%	0.05%	0.06%	0.05%
	Meets	0.77%	0.71%	0.69%	0.75%	0.09%	0.09%	0.08%	0.09%
	Not Met	0.20%	0.23%	0.31%	0.24%	0.04%	0.05%	0.05%	0.06%
	No Sub	0.41%	0.41%	0.43%	0.42%	0.09%	0.09%	0.09%	0.09%
	Totals	<b>1.69%</b>	<b>1.63%</b>	<b>1.69%</b>	<b>1.69%</b>	<b>0.28%</b>	<b>0.28%</b>	<b>0.28%</b>	<b>0.28%</b>

20+SCH									
	Exceeds	0.91%	0.87%	0.79%	0.80%	0.21%	0.19%	0.16%	0.14%
	Meets	1.70%	1.60%	1.55%	1.72%	0.76%	0.76%	0.78%	0.78%
	Not Met	0.31%	0.39%	0.57%	0.39%	0.41%	0.31%	0.31%	0.38%
	No Sub	0.32%	0.31%	0.33%	0.33%	0.21%	0.32%	0.34%	0.28%
	Totals	<b>3.24%</b>	<b>3.17%</b>	<b>3.24%</b>	<b>3.24%</b>	<b>1.58%</b>	<b>1.58%</b>	<b>1.58%</b>	<b>1.58%</b>

Fall 2015	Objective:	CT1: Generate/ Communicate				CT 2-3: Analyze/Evaluate			
	Criteria:	Position	Explanation	Evidence	Conclusion	Evidence	Analysis	Evaluati on	Synthesis
% of Category		CT1-1	CT1-2	CT1-3	CT1-4	CT2-1	CT2-2	CT2-3	CT2-4
<20SCH									
	Exceeds	6.10%	5.76%	5.09%	5.57%	3.14%	2.77%	3.06%	2.57%
	Meets	15.54%	14.81%	14.05%	15.11%	4.95%	4.58%	4.46%	4.74%
	Not Met	4.13%	4.87%	6.36%	4.97%	2.37%	2.73%	2.53%	3.06%
	No Sub	8.41%	8.50%	8.68%	8.53%	4.62%	4.99%	4.99%	4.66%
	Totals	<b>34.18%</b>	<b>33.95%</b>	<b>34.18%</b>	<b>34.18%</b>	<b>15.08%</b>	<b>15.08%</b>	<b>15.04%</b>	<b>15.04%</b>

20+SCH									
	Exceeds	18.39%	18.05%	15.96%	16.31%	11.10%	10.17%	8.48%	7.76%
	Meets	34.56%	33.45%	31.52%	34.95%	40.81%	40.81%	41.98%	41.94%
	Not Met	6.30%	8.10%	11.60%	7.95%	21.91%	16.61%	16.45%	20.23%
	No Sub	6.57%	6.46%	6.74%	6.60%	11.10%	17.33%	18.05%	15.04%
	Totals	<b>65.82%</b>	<b>66.05%</b>	<b>65.82%</b>	<b>65.82%</b>	<b>84.92%</b>	<b>84.92%</b>	<b>84.96%</b>	<b>84.96%</b>
<b>Grand Total</b>		100.00%	100.00%	100.00%	100.00%	100.00%	100.00 %	100.00 %	100.00%

Table 3: Results for Empirical and Quantitative Skills

Fall 2015	Objective:	EQS 1: Numerical Data			EQS 2: Observable Facts		
		Criteria:	Manipulate	Analyze	Conclusion	Manipulate	Analyse
<b>Head-Counts</b>		EQS1-1	EQS1-2	EQS1-3	EQS2-1	EQS2-2	EQS2-3
<20SCH							
	Exceeds	66	61	67	120	128	130
	Meets	90	96	98	295	294	309
	Not Met	60	61	53	120	119	97
	No Sub	107	106	106	338	332	337
	<b>Totals</b>	<b>323</b>	<b>324</b>	<b>324</b>	<b>873</b>	<b>873</b>	<b>873</b>

20+SCH							
	Exceeds	160	174	193	549	594	583
	Meets	461	431	433	1270	1251	1284
	Not Met	157	170	148	509	553	439
	No Sub	185	187	188	419	351	441
	<b>Totals</b>	<b>963</b>	<b>962</b>	<b>962</b>	<b>2747</b>	<b>2749</b>	<b>2747</b>
<b>Grand Total</b>		<b>1286</b>	<b>1286</b>	<b>1286</b>	<b>3620</b>	<b>3622</b>	<b>3620</b>

% Within Category		EQ1-1	EQ1-2	EQ1-3	EQ2-1	EQ2-2	EQ2-3
<20SCH							
	Exceeds	0.05%	0.05%	0.05%	0.09%	0.10%	0.10%
	Meets	0.07%	0.07%	0.07%	0.22%	0.22%	0.23%
	Not Met	0.04%	0.05%	0.04%	0.09%	0.09%	0.07%
	No Sub	0.08%	0.08%	0.08%	0.25%	0.25%	0.25%
	<b>Totals</b>	<b>0.24%</b>	<b>0.24%</b>	<b>0.24%</b>	<b>0.65%</b>	<b>0.65%</b>	<b>0.65%</b>

20+SCH							
	Exceeds	0.12%	0.13%	0.14%	0.41%	0.44%	0.44%
	Meets	0.34%	0.32%	0.32%	0.95%	0.93%	0.96%
	Not Met	0.12%	0.13%	0.11%	0.38%	0.41%	0.33%
	No Sub	0.14%	0.14%	0.14%	0.31%	0.26%	0.33%
	<b>Totals</b>	<b>0.72%</b>	<b>0.72%</b>	<b>0.72%</b>	<b>2.05%</b>	<b>2.05%</b>	<b>2.05%</b>





Table 4: Results for Personal Responsibility

Fall 2015	Objective:	PR 1: Choices and Consequences		
	Criteria:	Identification	Connection	Response
Head-Counts		PR1-1	PR1-2	PR1-3
<20SCH				
	Exceeds	327	317	312
	Meets	843	836	836
	Not Met	207	224	231
	No Sub	466	466	464
	Totals	<b>1843</b>	<b>1843</b>	<b>1843</b>

20+SCH				
	Exceeds	958	913	933
	Meets	2021	2034	2005
	Not Met	372	396	405
	No Sub	351	359	359
	Totals	<b>3702</b>	<b>3702</b>	<b>3702</b>
<b>Grand Total</b>		<b>5545</b>	<b>5545</b>	<b>5545</b>

% Within Category		PR1-1	PR1-2	PR1-3
<20SCH				
	Exceeds	0.24%	0.24%	0.23%
	Meets	0.63%	0.62%	0.62%
	Not Met	0.15%	0.17%	0.17%
	No Sub	0.35%	0.35%	0.35%
	Totals	<b>1.38%</b>	<b>1.38%</b>	<b>1.38%</b>

20+SCH				
	Exceeds	0.72%	0.68%	0.70%
	Meets	1.51%	1.52%	1.50%
	Not Met	0.28%	0.30%	0.30%
	No Sub	0.26%	0.27%	0.27%
	Totals	<b>2.76%</b>	<b>2.76%</b>	<b>2.76%</b>

Fall 2015	Objective:	PR 1: Choices and Consequences		
	Criteria:	Identification	Connection	Response
% of Category		PR1-1	PR1-2	PR1-3
<20SCH				
	Exceeds	5.90%	5.72%	5.63%
	Meets	15.20%	15.08%	15.08%
	Not Met	3.73%	4.04%	4.17%
	No Sub	8.40%	8.40%	8.37%
	Totals	<b>33.24%</b>	<b>33.24%</b>	<b>33.24%</b>

20+SCH				
	Exceeds	17.28%	16.47%	16.83%
	Meets	36.45%	36.68%	36.16%
	Not Met	6.71%	7.14%	7.30%
	No Sub	6.33%	6.47%	6.47%
	Totals	<b>66.76%</b>	<b>66.76%</b>	<b>66.76%</b>
<b>Grand Total</b>		100.00%	100.00%	100.00%

Table 5: Results for Social Responsibility

Fall 2015	Objective:	SR 1: Intercultural Competence		SR 2: Civic Responsibility			SR 3: Communities		
		Recognize elements	Describe effects	Comprehend	Reflect	Communicate	Awareness	Impact	Action
Head-Counts		SR1-1	SR1-2	SR2-1	SR2-2	SR2-3	SR3-1	SR3-2	SR3-3
<20SCH									
	Exceeds	79	78	195	166	166	149	147	138
	Meets	178	187	251	263	269	331	337	302
	Not Met	70	80	124	139	134	84	80	117
	No Sub	185	193	113	115	114	226	229	236
	Totals	<b>512</b>	<b>538</b>	<b>683</b>	<b>683</b>	<b>683</b>	<b>790</b>	<b>793</b>	<b>793</b>

20+SCH									
	Exceeds	343	335	665	606	636	596	584	513
	Meets	630	604	852	821	852	863	860	844
	Not Met	181	223	262	334	282	68	82	157
	No Sub	137	145	186	204	195	171	176	188
	Totals	<b>1291</b>	<b>1307</b>	<b>1965</b>	<b>1965</b>	<b>1965</b>	<b>1698</b>	<b>1702</b>	<b>1702</b>
<b>Grand Total</b>		<b>1803</b>	<b>1845</b>	<b>2648</b>	<b>2648</b>	<b>2648</b>	<b>2488</b>	<b>2495</b>	<b>2495</b>

% Within Category		SR1-1	SR1-2	SR2-1	SR2-2	SR2-3	SR3-1	SR3-2	SR3-3
<20SCH									
	Exceeds	0.06%	0.06%	0.15%	0.12%	0.12%	0.11%	0.11%	0.10%
	Meets	0.13%	0.14%	0.19%	0.20%	0.20%	0.25%	0.25%	0.23%
	Not Met	0.05%	0.06%	0.09%	0.10%	0.10%	0.06%	0.06%	0.09%
	No Sub	0.14%	0.14%	0.08%	0.09%	0.09%	0.17%	0.17%	0.18%
	Totals	<b>0.38%</b>	<b>0.40%</b>	<b>0.51%</b>	<b>0.51%</b>	<b>0.51%</b>	<b>0.59%</b>	<b>0.59%</b>	<b>0.59%</b>

20+SCH									
	Exceeds	0.26%	0.25%	0.50%	0.45%	0.47%	0.44%	0.44%	0.38%
	Meets	0.47%	0.45%	0.64%	0.61%	0.64%	0.64%	0.64%	0.63%
	Not Met	0.14%	0.17%	0.20%	0.25%	0.21%	0.05%	0.06%	0.12%
	No Sub	0.10%	0.11%	0.14%	0.15%	0.15%	0.13%	0.13%	0.14%
	Totals	<b>0.96%</b>	<b>0.98%</b>	<b>1.47%</b>	<b>1.47%</b>	<b>1.47%</b>	<b>1.27%</b>	<b>1.27%</b>	<b>1.27%</b>



Table 6: Results for Teamwork

Fall 2015	Objective:	TW 1-2: Teamwork		
	Criteria:	Team Interaction	Individual	Purpose/Goal
Head-Counts		TW1-2-1	TW1-2-2	TW1-2-3
<20SCH				
	Exceeds	242	246	244
	Meets	678	667	672
	Not Met	163	169	165
	No Sub	389	390	391
	Totals	<b>1472</b>	<b>1472</b>	<b>1472</b>

20+SCH				
	Exceeds	992	1025	908
	Meets	1835	1809	1910
	Not Met	208	202	216
	No Sub	209	208	210
	Totals	<b>3244</b>	<b>3244</b>	<b>3244</b>
<b>Grand Total</b>		<b>4716</b>	<b>4716</b>	<b>4716</b>

% Within Category		TW-1	TW-2	TW-3
<20SCH				
	Exceeds	0.18%	0.18%	0.18%
	Meets	0.51%	0.50%	0.50%
	Not Met	0.12%	0.13%	0.12%
	No Sub	0.29%	0.29%	0.29%
	Totals	<b>1.10%</b>	<b>1.10%</b>	<b>1.10%</b>

20+SCH				
	Exceeds	0.74%	0.77%	0.68%
	Meets	1.37%	1.35%	1.43%
	Not Met	0.16%	0.15%	0.16%
	No Sub	0.16%	0.16%	0.16%
	Totals	<b>2.42%</b>	<b>2.42%</b>	<b>2.42%</b>

Fall 2015	Objective:	TW 1-2: Teamwork		
	Criteria:	Team Interaction	Individual	Purpose/Goal
% of Category		TW-1	TW-2	TW-3
<20SCH				
	Exceeds	5.13%	5.22%	5.17%
	Meets	14.38%	14.14%	14.25%
	Not Met	3.46%	3.58%	3.50%
	No Sub	8.25%	8.27%	8.29%
	Totals	<b>31.21%</b>	<b>31.21%</b>	<b>31.21%</b>

20+SCH				
	Exceeds	21.03%	21.73%	19.25%
	Meets	38.91%	38.36%	40.50%
	Not Met	4.41%	4.28%	4.58%
	No Sub	4.43%	4.41%	4.45%
	Totals	<b>68.79%</b>	<b>68.79%</b>	<b>68.79%</b>
<b>Grand Total</b>		100.00%	100.00%	100.00%

Table 7: Results for Communication

Spring 2016	Objective:	CS1: Written Communication				CS2: Oral Communication		CS3: Visual Communication	
	Criteria:	Organization	Development Support	Language Skills	Format	Develop Support	Express Ideas	Develop Support	Express Ideas
Head-Counts		CS1-1	CS1-2	CS1-3	CS1-4	CS2-1	CS2-2	CS3-1	CS3-2
<20SCH									
	Exceeds	493	421	445	395	47	45	17	22
	Meets	824	828	820	789	113	117	98	102
	Not Met	195	227	217	283	22	22	35	26
	No Sub	505	552	546	561	85	84	75	75
	Totals	2017	2028	2028	2028	267	268	225	225

20+SCH									
	Exceeds	1196	1045	1030	981	554	489	120	120
	Meets	1870	1893	1976	1888	607	683	522	531
	Not Met	311	447	371	500	45	34	65	56
	No Sub	441	439	447	455	50	49	52	52
	Totals	3818	3824	3824	3824	1256	1255	759	759
<b>Grand Total</b>		<b>5835</b>	<b>5852</b>	<b>5852</b>	<b>5852</b>	<b>1523</b>	<b>1523</b>	<b>984</b>	<b>984</b>

% Within Category		CS1-1	CS1-2	CS1-3	CS1-4	CS2-1	CS3-1	CS3-2	CS2-4
<20SCH									
	Exceeds	0.44%	0.37%	0.39%	0.35%	0.04%	0.04%	0.02%	0.02%
	Meets	0.73%	0.73%	0.73%	0.70%	0.10%	0.10%	0.09%	0.09%
	Not Met	0.17%	0.20%	0.19%	0.25%	0.02%	0.02%	0.03%	0.02%
	No Sub	0.45%	0.49%	0.48%	0.50%	0.08%	0.07%	0.07%	0.07%
	Totals	<b>1.79%</b>	<b>1.80%</b>	<b>1.80%</b>	<b>1.80%</b>	<b>0.24%</b>	<b>0.24%</b>	<b>0.20%</b>	<b>0.20%</b>

20+SCH									
	Exceeds	1.06%	0.93%	0.91%	0.87%	0.49%	0.43%	0.11%	0.11%
	Meets	1.66%	1.68%	1.75%	1.67%	0.54%	0.61%	0.46%	0.47%
	Not Met	0.28%	0.40%	0.33%	0.44%	0.04%	0.03%	0.06%	0.05%
	No Sub	0.39%	0.39%	0.40%	0.40%	0.04%	0.04%	0.05%	0.05%
	Totals	<b>3.38%</b>	<b>3.39%</b>	<b>3.39%</b>	<b>3.39%</b>	<b>1.11%</b>	<b>1.11%</b>	<b>0.67%</b>	<b>0.67%</b>





Table 8: Results for Critical Thinking

Spring 2016	Objective	CT1: Generate/ Communicate				CT 2-3: Analyze/ Evaluate			
	Criteria:	Position	Explanation	Evidence	Conclusion	Evidence	Analysis	Evaluation	Synthesis
Head-Counts		CT1-1	CT1-2	CT1-3	CT1-4	CT2-3-1	CT2-3-2	CT2-3-3	CT2-3-4
<20SCH									
	Exceeds	419	359	384	370	64	57	66	54
	Meets	888	813	795	877	130	123	112	129
	Not Met	181	220	280	210	41	41	41	39
	No Sub	517	528	547	548	88	102	105	102
	Totals	2005	1920	2006	2005	323	323	324	324

20+SCH									
	Exceeds	1074	993	963	988	221	179	204	154
	Meets	1766	1658	1643	1785	919	922	884	947
	Not Met	278	348	513	353	603	486	472	497
	No Sub	359	346	357	351	339	495	521	483
	Totals	3477	3345	3476	3477	2082	2082	2081	2081
<b>Grand Total</b>		<b>5482</b>	<b>5265</b>	<b>5482</b>	<b>5482</b>	<b>2405</b>	<b>2405</b>	<b>2405</b>	<b>2405</b>

% Within Category		CT1-1	CT1-2	CT1-3	CT1-4	CT2-1	CT2-2	CT2-3	CT2-4
<20SCH									
	Exceeds	0.37%	0.32%	0.34%	0.33%	0.06%	0.05%	0.06%	0.05%
	Meets	0.79%	0.72%	0.70%	0.78%	0.12%	0.11%	0.10%	0.11%
	Not Met	0.16%	0.19%	0.25%	0.19%	0.04%	0.04%	0.04%	0.03%
	No Sub	0.46%	0.47%	0.48%	0.49%	0.08%	0.09%	0.09%	0.09%
	Totals	<b>1.78%</b>	<b>1.70%</b>	<b>1.78%</b>	<b>1.78%</b>	<b>0.29%</b>	<b>0.29%</b>	<b>0.29%</b>	<b>0.29%</b>

20+SCH									
	Exceeds	0.95%	0.88%	0.85%	0.88%	0.20%	0.16%	0.18%	0.14%
	Meets	1.56%	1.47%	1.46%	1.58%	0.81%	0.82%	0.78%	0.84%
	Not Met	0.25%	0.31%	0.45%	0.31%	0.53%	0.43%	0.42%	0.44%
	No Sub	0.32%	0.31%	0.32%	0.31%	0.30%	0.44%	0.46%	0.43%
	Totals	<b>3.08%</b>	<b>2.96%</b>	<b>3.08%</b>	<b>3.08%</b>	<b>1.84%</b>	<b>1.84%</b>	<b>1.84%</b>	<b>1.84%</b>



Table 9: Results for Empirical and Quantitative Skills

Spring 2016	Objective:	EQS 1: Numerical Data			EQS 2: Observable Facts		
	Criteria:	Manipulate	Analyze	Conclusion	Manipulate	Analyze	Conclusion
Head-Counts		EQS1-1	EQS1-2	EQS1-3	EQS2-1	EQS2-2	EQS2-3
<20SCH							
	Exceeds	63	56	63	168	153	148
	Meets	81	92	88	360	349	376
	Not Met	14	10	8	87	79	57
	No Sub	78	78	77	224	258	258
	Totals	236	236	236	839	839	839

20+SCH							
	Exceeds	155	134	152	367	354	324
	Meets	306	324	332	1048	1130	1148
	Not Met	69	71	47	491	392	396
	No Sub	154	155	153	412	442	450
	Totals	684	684	684	2318	2318	2318
<b>Grand Total</b>		<b>920</b>	<b>920</b>	<b>920</b>	<b>3157</b>	<b>3157</b>	<b>3157</b>

% Within Category		EQ1-1	EQ1-2	EQ1-3	EQ2-1	EQ2-2	EQ2-3
<20SCH							
	Exceeds	0.06%	0.05%	0.06%	0.15%	0.14%	0.13%
	Meets	0.07%	0.08%	0.08%	0.32%	0.31%	0.33%
	Not Met	0.01%	0.01%	0.01%	0.08%	0.07%	0.05%
	No Sub	0.07%	0.07%	0.07%	0.20%	0.23%	0.23%
	Totals	<b>0.21%</b>	<b>0.21%</b>	<b>0.21%</b>	<b>0.74%</b>	<b>0.74%</b>	<b>0.74%</b>

20+SCH							
	Exceeds	0.14%	0.12%	0.13%	0.33%	0.31%	0.29%
	Meets	0.27%	0.29%	0.29%	0.93%	1.00%	1.02%
	Not Met	0.06%	0.06%	0.04%	0.44%	0.35%	0.35%
	No Sub	0.14%	0.14%	0.14%	0.37%	0.39%	0.40%
	Totals	<b>0.61%</b>	<b>0.61%</b>	<b>0.61%</b>	<b>2.05%</b>	<b>2.05%</b>	<b>2.05%</b>



Table 10: Results for Personal Responsibility

Spring 2016	Objective:	PR 1: Choices and Consequences		
	Criteria:	Identification	Connection	Response
<b>Head-Counts</b>		PR1-1	PR1-2	PR1-3
<20SCH				
	Exceeds	382	363	350
	Meets	736	722	725
	Not Met	125	133	147
	No Sub	423	448	444
	<b>Totals</b>	<b>1666</b>	<b>1666</b>	<b>1666</b>

20+SCH				
	Exceeds	932	927	932
	Meets	1530	1510	1535
	Not Met	267	288	259
	No Sub	305	309	308
	<b>Totals</b>	<b>3034</b>	<b>3034</b>	<b>3034</b>
<b>Grand Total</b>		<b>4700</b>	<b>4700</b>	<b>4700</b>

% Within Category		PR1-1	PR1-2	PR1-3
<20SCH				
	Exceeds	0.34%	0.32%	0.31%
	Meets	0.65%	0.64%	0.64%
	Not Met	0.11%	0.12%	0.13%
	No Sub	0.37%	0.40%	0.39%
	<b>Totals</b>	<b>1.48%</b>	<b>1.48%</b>	<b>1.48%</b>

20+SCH				
	Exceeds	0.83%	0.82%	0.83%
	Meets	1.36%	1.34%	1.36%
	Not Met	0.24%	0.26%	0.23%
	No Sub	0.27%	0.27%	0.27%
	<b>Totals</b>	<b>2.69%</b>	<b>2.69%</b>	<b>2.69%</b>

<b>Spring 2016</b>	<b>Objective:</b>	<b>PR 1: Choices and Consequences</b>		
	Criteria:	Identification	Connection	Response

% of Category		PR1-1	PR1-2	PR1-3
<20SCH				
	Exceeds	8.13%	7.72%	7.45%
	Meets	15.66%	15.36%	15.43%
	Not Met	2.66%	2.83%	3.13%
	No Sub	9.00%	9.53%	9.45%
	<b>Totals</b>	<b>35.45%</b>	<b>35.45%</b>	<b>35.45%</b>

20+SCH				
	Exceeds	19.83%	19.72%	19.83%
	Meets	32.55%	32.13%	32.66%
	Not Met	5.68%	6.13%	5.51%
	No Sub	6.49%	6.57%	6.55%
	<b>Totals</b>	<b>64.55%</b>	<b>64.55%</b>	<b>64.55%</b>
<b>Grand Total</b>		100.00%	100.00%	100.00%

Table 11: Results for Social Responsibility

Spring 2016	Objective:	SR 1: Intercultural Competence		SR 2: Civic Responsibility			SR 3: Communities		
		Recognize elements	Describe effects	Comprehend	Reflect	Communi cate	Awareness	Impact	Action
Head-Counts		SR1-1	SR1-2	SR2-1	SR2-2	SR2-3	SR3-1	SR3-2	SR3-3
<20SCH									
	Exceeds	42	44	228	179	187	164	165	200
	Meets	183	175	213	262	255	318	315	277
	Not Met	33	30	79	80	78	60	64	93
	No Sub	150	159	110	109	110	244	243	218
	Totals	408	408	630	630	630	786	787	788

20+SCH									
	Exceeds	350	334	551	519	577	346	370	356
	Meets	554	554	702	731	686	539	511	471
	Not Met	97	102	238	238	227	35	44	90
	No Sub	158	169	138	141	139	121	119	126
	Totals	1159	1159	1629	1629	1629	1041	1044	1043
<b>Grand Total</b>		<b>1567</b>	<b>1567</b>	<b>2259</b>	<b>2259</b>	<b>2259</b>	<b>1827</b>	<b>1831</b>	<b>1831</b>

% Within Category		SR1-1	SR1-2	SR2-1	SR2-2	SR2-3	SR3-1	SR3-2	SR3-3
<20SCH									
	Exceeds	0.04%	0.04%	0.20%	0.16%	0.17%	0.15%	0.15%	0.18%
	Meets	0.16%	0.16%	0.19%	0.23%	0.23%	0.28%	0.28%	0.25%
	Not Met	0.03%	0.03%	0.07%	0.07%	0.07%	0.05%	0.06%	0.08%
	No Sub	0.13%	0.14%	0.10%	0.10%	0.10%	0.22%	0.22%	0.19%
	Totals	<b>0.36%</b>	<b>0.36%</b>	<b>0.56%</b>	<b>0.56%</b>	<b>0.56%</b>	<b>0.70%</b>	<b>0.70%</b>	<b>0.70%</b>

20+SCH									
	Exceeds	0.31%	0.30%	0.49%	0.46%	0.51%	0.31%	0.33%	0.32%
	Meets	0.49%	0.49%	0.62%	0.65%	0.61%	0.48%	0.45%	0.42%
	Not Met	0.09%	0.09%	0.21%	0.21%	0.20%	0.03%	0.04%	0.08%
	No Sub	0.14%	0.15%	0.12%	0.12%	0.12%	0.11%	0.11%	0.11%
	Totals	<b>1.03%</b>	<b>1.03%</b>	<b>1.44%</b>	<b>1.44%</b>	<b>1.44%</b>	<b>0.92%</b>	<b>0.93%</b>	<b>0.92%</b>





Table 12: Results for Teamwork

Spring 2016	Objective:	TW 1-2: Teamwork		
	Criteria:	Team Interaction	Individual	Purpose/Goal
	Totals			
Head-Counts		TW1-2-1	TW1-2-2	TW1-2-3
<20SCH				
	Exceeds	215	219	213
	Meets	515	513	531
	Not Met	81	80	67
	No Sub	290	290	291
	Totals	1101	1102	1102

20+SCH				
	Exceeds	874	820	841
	Meets	1536	1599	1562
	Not Met	133	123	126
	No Sub	150	150	163
	Totals	2693	2692	2692
<b>Grand Total</b>		<b>3794</b>	<b>3794</b>	<b>3794</b>

% Within Category		TW-1	TW-2	TW-3
<20SCH				
	Exceeds	0.19%	0.19%	0.19%
	Meets	0.46%	0.45%	0.47%
	Not Met	0.07%	0.07%	0.06%
	No Sub	0.26%	0.26%	0.26%
	Totals	<b>0.98%</b>	<b>0.98%</b>	<b>0.98%</b>

20+SCH				
	Exceeds	0.77%	0.73%	0.75%
	Meets	1.36%	1.42%	1.38%
	Not Met	0.12%	0.11%	0.11%
	No Sub	0.13%	0.13%	0.14%
	Totals	<b>2.39%</b>	<b>2.39%</b>	<b>2.39%</b>

<b>Spring 2016</b>	<b>Objective:</b>	<b>TW 1-2: Teamwork</b>		
	Criteria:	Team Interaction	Individual	Purpose/Goal
<b>% of Category</b>		TW-1	TW-2	TW-3
<20SCH				
	Exceeds	5.67%	5.77%	5.61%
	Meets	13.57%	13.52%	14.00%
	Not Met	2.13%	2.11%	1.77%
	No Sub	7.64%	7.64%	7.67%
	<b>Totals</b>	<b>29.02%</b>	<b>29.05%</b>	<b>29.05%</b>

20+SCH				
	Exceeds	23.04%	21.61%	22.17%
	Meets	40.48%	42.15%	41.17%
	Not Met	3.51%	3.24%	3.32%
	No Sub	3.95%	3.95%	4.30%
	<b>Totals</b>	<b>70.98%</b>	<b>70.95%</b>	<b>70.95%</b>
<b>Grand Total</b>		100.00%	100.00%	100.00%

Table 13: Comparison of Fall 2015 to Spring 2016: Percentages of Success

Percentages of students who received either “exceeds” or “meets” criteria (%EM) are compared. T test between fall and spring shows no significant difference between these two samples. (T value: 0.336127)

Outcome:	Criteria:	Fall 2015	Spring 2016
<b>CS1: Written Communication</b>	<b>Organization</b>	% EM	% EM
	Development Support	91%	91%
	Language Skills	85%	87%
	Format	89%	89%
<b>CS2: Oral Communication</b>	Develop Support	83%	85%
	Express Ideas	95%	96%
<b>CS3: Visual Communication</b>	Develop Support	92%	97%
	Express Ideas	87%	91%
<b>CT1: Generate/Communicate</b>	<b>Position</b>	87%	92%
	Explanation	89%	91%
	Evidence	86%	88%
	Conclusion	80%	84%
<b>CT 2-3: Analyze/Evaluate</b>	<b>Evidence</b>	87%	89%
	Analysis	70%	65%
	Evaluation	75%	69%
	Synthesis	75%	70%
<b>EQS 1: Numerical Data</b>	<b>Manipulate</b>	71%	69%
	Analyze	80%	87%
	Conclusion	78%	87%
<b>EQS 2: Observable Facts</b>	Manipulate	81%	91%
	Analyze	78%	74%
	Conclusion	77%	79%

Outcome:	Criteria:	Fall 2015	Spring 2016
<b>PR 1: Choices and Consequences</b>	Identification	81%	79%
	Connection	89%	90%
	Response	88%	89%
<b>SR 1: Intercultural Competence</b>	Recognize elements	88%	90%
	Describe effects	84%	90%
<b>SR 2: Civic Responsibility</b>	Comprehend	81%	90%
	Reflect	85%	84%
	Communicate	81%	84%
<b>SR 3: Communities</b>	Awareness	84%	85%
	Impact	96%	96%
	Action	95%	95%
<b>TW 1-2: Teamwork</b>	Team Interaction	90%	90%
	Individual	93%	95%
	Purpose/Goal	93%	95%
		93%	95%

Table 14: Comparison of Students with <20 to Students with 20+ SCH: Percentages of Success

Fall 2015 and Spring 2016 were combined for this analysis. Percent of success (%EM) is the combination of scores of “exceeds” and “meets” criteria. Comparison of students with fewer than 20 SCH (semester credit hours) shows significantly lower rates of success when compared with students who have earned at least 20 semester hours of college credit. (T value: 4.92E-13)

Objective:	Criteria:		15-16 <20 % EM	15-16 20+ % EM
<b>CS1: Written Communication</b>	<b>Organization</b>	CS1-1	64%	80%
	Development Support	CS1-2	59%	76%
	Language Skills	CS1-3	62%	79%
	Format	CS1-4	57%	74%
<b>CS2: Oral Communication</b>	Develop Support	CS2-1	60%	92%
	Express Ideas	CS2-2	61%	91%
<b>CS3: Visual Communication</b>	Develop Support	CS3-1	54%	84%
	Express Ideas	CS3-2	59%	84%
<b>CT1: Generate/Communicate</b>	<b>Position</b>	CT1-1	64%	81%
	Explanation	CT1-2	61%	79%
	Evidence	CT1-3	57%	73%
	Conclusion	CT1-4	61%	79%
<b>CT 2-3: Analyze/Evaluate</b>	<b>Evidence</b>	CT2-3-1	57%	58%
	Analysis	CT2-3-2	52%	56%
	Evaluation	CT2-3-3	52%	56%
	Synthesis	CT2-3-4	52%	56%
<b>EQS 1: Numerical Data</b>	<b>Manipulate</b>	EQS1-1	54%	66%
	Analyze	EQS1-2	54%	65%

Objective:	Criteria:		15-16 <20 % EM	15-16 20+ % EM
	Conclusion	EQS1-3	56%	67%
<b>EQS 2: Observable Facts</b>	Manipulate	EQS2-1	55%	64%
	Analyse	EQS2-2	54%	66%
	Conclusion	EQS2-3	56%	66%
<b>PR 1: Choices and Consequences</b>	Identification	PR1-1	65%	81%
	Connection	PR1-2	64%	80%
	Response	PR1-3	63%	80%
<b>SR 1: Intercultural Competence</b>	Recognize elements	SR1-1	52%	77%
	Describe effects	SR1-2	51%	74%
<b>SR 2: Civic Responsibility</b>	Comprehend	SR2-1	68%	77%
	Reflect	SR2-2	66%	74%
	Communicate	SR2-3	67%	77%
<b>SR 3: Communities</b>	Awareness	SR3-1	61%	86%
	Impact	SR3-2	61%	85%
	Action	SR3-3	58%	80%
<b>TW 1-2: Teamwork</b>	Team Interaction	TW1-2-1	64%	88%
	Individual	TW1-2-2	64%	88%
	Purpose/Goal	TW1-2-3	64%	88%

### Comparison of < 20 to 20+ SCH

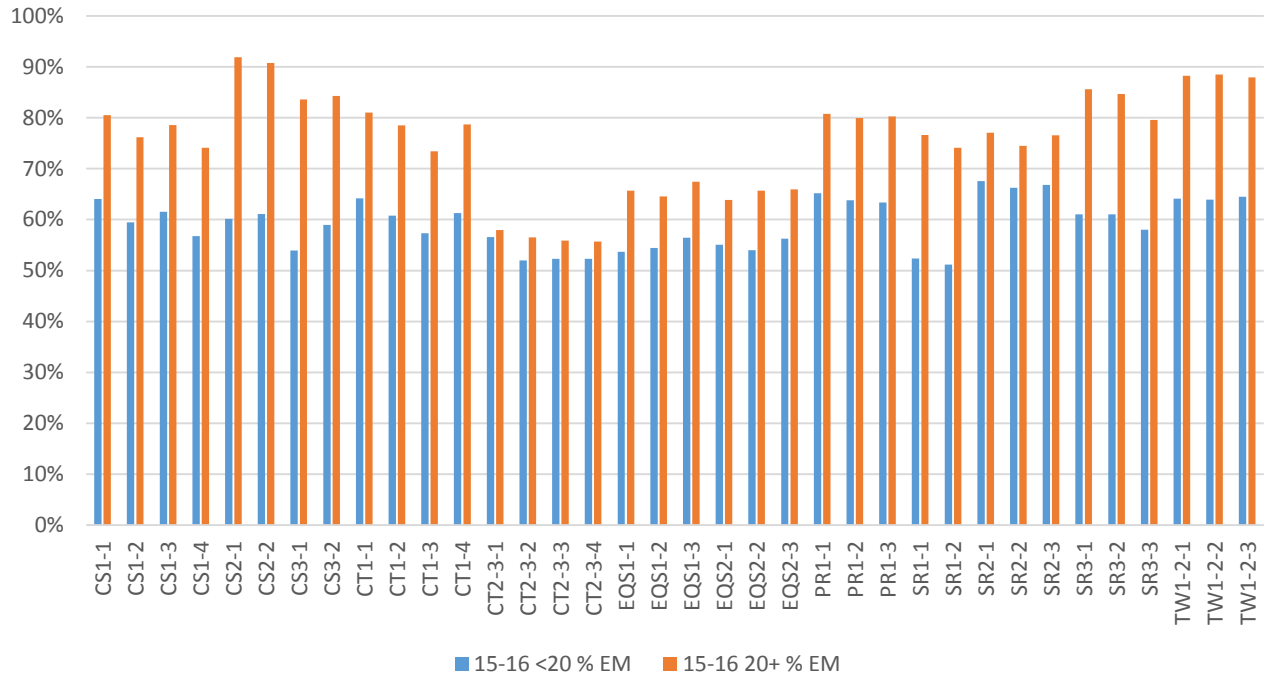




Table 15: Combined Results: Communication Skills

		Head-Counts	2015-16	2015-16	2015-16	2015-16
<b>Objective:</b>	Criteria:		No Sub	Not Met	Meets	Exceeds
<b>CS1: Written Communication</b>	<b>Organization</b>	CS1-1	11%	8%	48%	32%
	Development Support	CS1-2	11%	13%	49%	27%
	Language Skills	CS1-3	11%	10%	51%	27%
	Format	CS1-4	12%	14%	48%	26%
<b>CS2: Oral Communication</b>	Develop Support	CS2-1	4%	4%	55%	37%
	Express Ideas	CS2-2	4%	5%	60%	31%
<b>CS3: Visual Communication</b>	Develop Support	CS3-1	6%	10%	68%	15%
	Express Ideas	CS3-2	6%	10%	68%	16%

Communication Skills

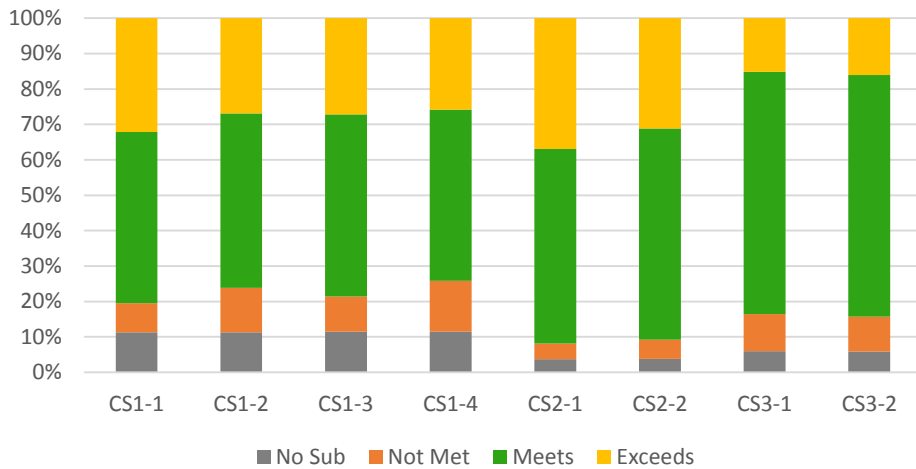


Table 16: Combined Results: Critical Thinking

		Head-Counts	2015-16	2015-16	2015-16	2015-16
Objective:	Criteria:		No Sub	Not Met	Meets	Exceeds
CT1: Generate/Communicate	Position	CT1-1	10%	9%	52%	29%
	Explanation	CT1-2	10%	11%	50%	28%
	Evidence	CT1-3	10%	16%	48%	26%
	Conclusion	CT1-4	10%	11%	52%	26%
CT 2-3: Analyze/Evaluate	Evidence	CT2-3-1	15%	27%	46%	12%
	Analysis	CT2-3-2	22%	21%	46%	10%
	Evaluation	CT2-3-3	23%	21%	46%	10%

Critical Thinking

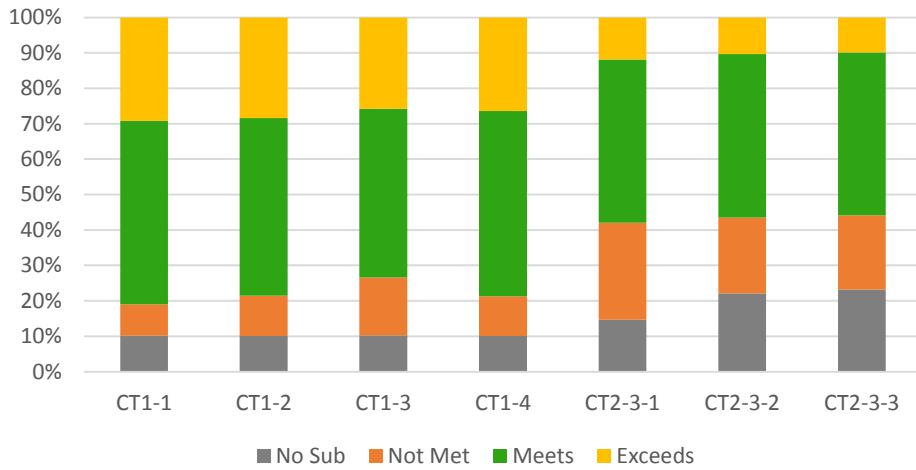


Table 17: Combined Results: Empirical and Quantitative Skills

		Head-Counts	2015-16	2015-16	2015-16	2015-16
Objective:	Criteria:		No Sub	Not Met	Meets	Exceeds
EQS 1: Numerical Data	Manipulate	EQS1-1	21%	14%	47%	19%
	Analyze	EQS1-2	21%	15%	46%	19%
	Conclusion	EQS1-3	21%	12%	46%	21%
EQS 2: Observable Facts	Manipulate	EQS2-1	16%	20%	46%	18%
	Analyse	EQS2-2	16%	19%	47%	19%
	Conclusion	EQS2-3	18%	16%	48%	18%

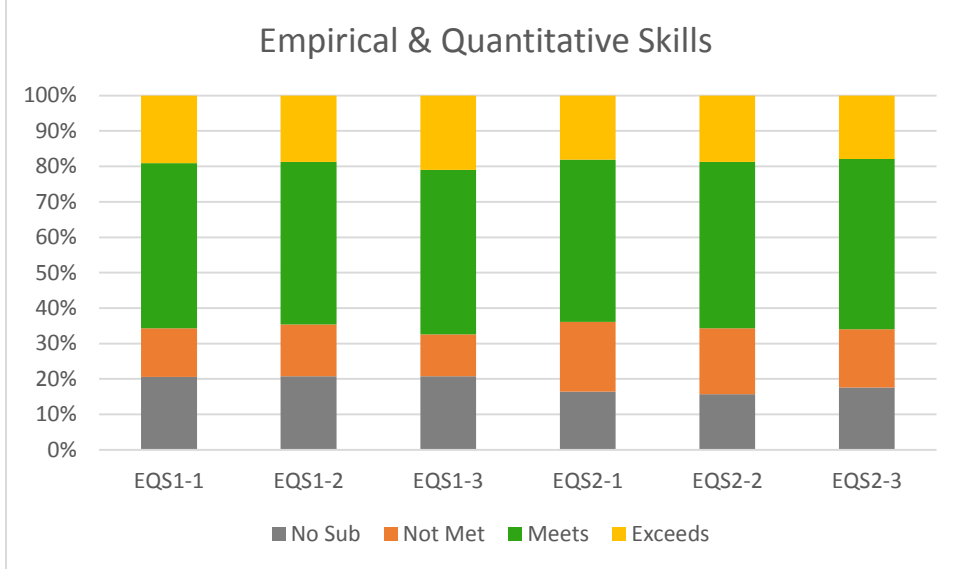


Table 18: Combined Results: Personal Responsibility

		Head-Counts	2015-16	2015-16	2015-16	2015-16
Objective:	Criteria:		No Sub	Not Met	Meets	Exceeds
PR 1: Choices and Consequences	Identification	PR1-1	10%	9%	53%	28%
	Connection	PR1-2	10%	10%	53%	27%
	Response	PR1-3	10%	10%	53%	28%

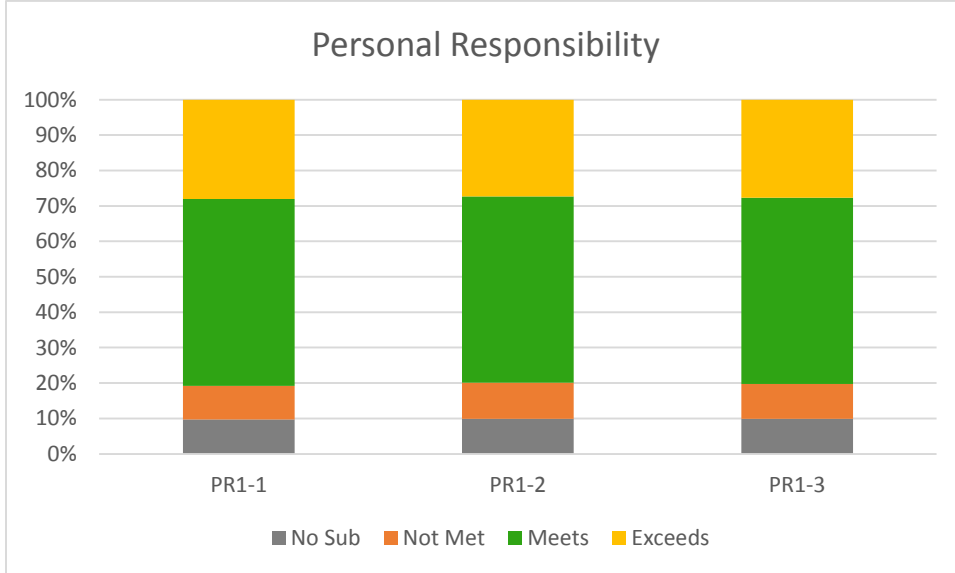


Table 19: Combined Results: Social Responsibility

		Head-Counts	2015-16	2015-16	2015-16	2015-16
Objective:	Criteria:		No Sub	Not Met	Meets	Exceeds
SR 1: Intercultural Competence	Recognize elements	SR1-1	12%	11%	48%	28%
	Describe effects	SR1-2	13%	13%	47%	27%
SR 2: Civic Responsibility	Comprehend	SR2-1	9%	14%	43%	34%
	Reflect	SR2-2	10%	16%	43%	31%
	Communicate	SR2-3	9%	14%	43%	34%
SR 3: Communities	Awareness	SR3-1	11%	4%	51%	34%
	Impact	SR3-2	11%	5%	50%	35%
	Action	SR3-3	11%	9%	48%	32%



Table 20: Combined Results: Teamwork

		Head-Counts	2015-16	2015-16	2015-16	2015-16
Objective:	Criteria:		No Sub	Not Met	Meets	Exceeds
TW 1-2: Teamwork	Team Interaction	TW1-2-1	6%	6%	57%	31%
	Individual	TW1-2-2	6%	5%	57%	31%
	Purpose/Goal	TW1-2-3	6%	6%	58%	29%

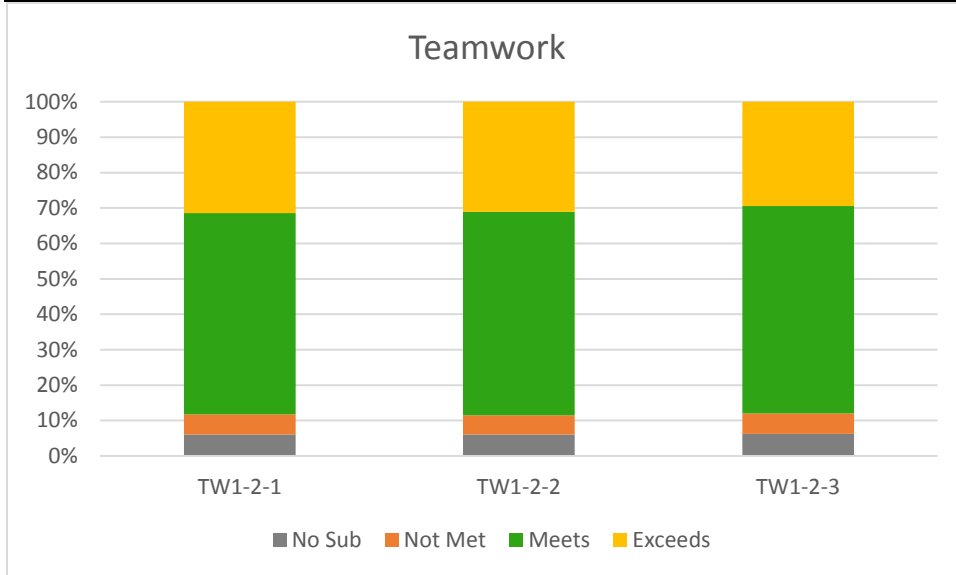


Table 21: Comparison of Spring 2015 with Spring 2016: Percentages of Success

Students who rated “exceeds” or “meets” criteria were compared from one spring semester to the next. To adjust for the change in outcome levels, the 2016 category “did not submit” was excluded, since the 2015 data did not include this category. The two samples are not significantly different (T value: 0.102635).

Criteria	Spring 2015	Spring 2016
	% EM	% EM
CS1-1	92%	91%
CS1-2	91%	87%
CS1-3	91%	89%
CS1-4	89%	85%
CS2-1	94%	96%
CS2-2	95%	97%
CS3-1	93%	91%
CS3-2	93%	92%
CT1-1	92%	91%
CT1-2	91%	88%
CT1-3	88%	84%
CT1-4	91%	89%
CT2-3-1	90%	65%
CT2-3-2	89%	69%
CT2-3-3	88%	70%
CT2-3-4	88%	69%
EQS1-1	81%	87%
EQS1-2	82%	87%
EQS1-3	75%	91%
EQS2-1	90%	74%
EQS2-2	90%	79%
EQS2-3	89%	79%

Criteria	Spring 2015	Spring 2016
	% EM	% EM
PR1-1	91%	90%
PR1-2	90%	90%
PR1-3	90%	84%
SR1-1	87%	84%
SR1-2	88%	85%
SR2-1	85%	96%
SR2-2	83%	95%
SR2-3	83%	90%
SR3-1	96%	95%
SR3-2	94%	95%
SR3-3	91%	95%
TW1-2-1	92%	90%
TW1-2-2	92%	89%
TW1-2-3	92%	90%

